

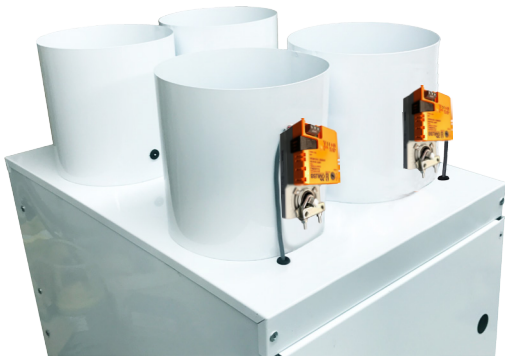


High Efficiency Heating, Cooling and Indoor Air Quality Systems

presents the

# HE-Z Zoning Series

Hi-Velocity Fan Coil w/ Multiple Collar Options



Comes complete with  
***Pre-Installed Zone Panel,***  
Power Open/Close  
Dampers and Actuators

2, 3 or 4 Zone packages available now!

Eliminate unsightly wiring and external controls

Save time and money on field installation and materials

Easy maintenance with all components in one accessible location

Compatible with standard third party thermostats and smart thermostats

HE-Z variable speed controls eliminate dump zones and minimize power draws

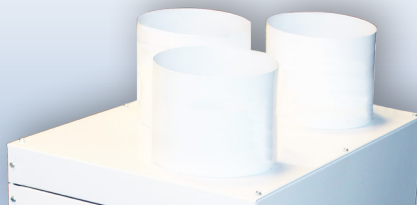
The HE-Z Zoning package, with multi-zone options, is available on our HE-Z Series Fan Coils. As stated by NRCan\*, zoning can **reduce energy consumption up to 50%** with increased comfort.

The HE-Z Zoning package is designed for continuous circulation when the thermostat is satisfied, allowing for **increased filtration and fresh-air make-up** at all times. With the addition of adjustable dampers, by-pass can be adjusted for minimal circulation in all zones during demand times. With **fan power consumption as low as 50 watts**, the HE-Z Zoning package is the pinnacle in energy efficiency.

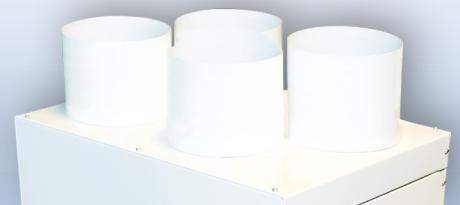
\*NRCan (Natural Resources Canada)



2 Supply Collars



3 Supply Collars



4 Supply Collars

[www.hi-velocity.com](http://www.hi-velocity.com)



High Efficiency Heating, Cooling and Indoor Air Quality Systems

# HE-Z Zoning Series

Hi-Velocity Fan Coil w/ Multiple Collar Options



- Matching Coils
- Refrigerant Coils
- RPM-E/RCM-50, 70, 100
- Chilled Water Coils
- WCM-50, 70, 100
- Hot Water Coils
- HWC-50, 70, 100
- Electrical Coils
- ESH-650 (5-15 kW)
- ESH-750 (5-18 kW)
- ESH-1100 (10-23 kW)

HE-Zone Supply Specifications	HE-Z-50/51	HE-Z-70/71	HE-Z-100/101
Supply Maximum Length <sup>(2)</sup>	70' (21.3m)	80' (24.4m)	100' (30.5m)
Supply Air Size (2 Supply Collars)	2 x 8" round (203mm)	2 x 8" round (203mm)	2 x 10" round (254mm)
Supply Air Size (3 Supply Collars)	2 x 8" round (203mm) 1 x 6" round (152mm)	2 x 8" round (203mm) 1 x 6" round (152mm)	3 x 8" round (203mm)
Supply Air Size (4 Supply Collars)	4 x 6" round (152mm)	4 x 6" round (152mm)	4 x 8" round (203mm)
Minimum Outlets (total per Fan Coil)	12 (2") 6 (HE)	20 (2") 10 (HE)	28 (2") 14 (HE)
Maximum Outlets (total per Fan Coil)	24 (2") 12 (HE)	32 (2") 16 (HE)	52 (2") 26 (HE)

NOTE: For design criteria, refer to Design/Installation Manuals for more information.

	HE-Z-50/51	HE-Z-70/71	HE-Z-100/101
<b>Hot Water Heating<sup>(1)</sup></b>	<b>2 Ton Airflow (7.0 kW)</b>	<b>3 Ton Airflow (10.6 kW)</b>	<b>5 Ton Airflow (17.6 kW)</b>
Coil Type	6 Row/10 FPI	6 Row/10 FPI	6 Row/10 FPI
Max. BTUH @ 160°F E.W.T. (kW @ 71°C)	44,600 (13.1 kW)	67,100 (19.7 kW)	100,700 (29.5 kW)
Max. BTUH @ 140°F E.W.T. (kW @ 60°C)	34,700 (10.2 kW)	51,800 (15.2 kW)	78,400 (23.0 kW)
Max. BTUH @ 120°F E.W.T. (kW @ 49°C)	24,800 (7.3 kW)	37,400 (11.0 kW)	56,200 (16.5 kW)
GPM Flow Ratings (L/s Flow Ratings)	5 (0.32 L/s)	7 (0.44 L/s)	10 (0.63 L/s)
Pressure Drop in Ft. H <sub>2</sub> O (Drop in KPa)	3 (8.96 KPa)	6.5 (19.4 KPa)	6.8 (20.3 KPa)

NOTE: Refer to Design Manual for full ratings

Refrigerant Cooling <sup>(1)</sup>	RPM-E/RCM-50	RPM-E/RCM-70	RPM-E/RCM-100
RPM-E/RCM Modules BTUH Refrigerant TX Cooling	1.5 - 2.0 Tons (5.3-7.0 kWh)	2.5 - 3.0 Tons (8.8-10.6 kWh)	3.5 - 5.0 Tons (12.3-17.6 kWh)

Electrical Heating	HV-650 ESH	HV-750 ESH	HV-1100 ESH
Kilowatt Range (240v)	5 - 15 kW	5 - 18 kW	10 - 23 kW

Fan Coil Specifications	HE-Z-50/51	HE-Z-70/71	HE-Z-100/101
Max Rated CFM @ 1.2" E.S.P. (L/s @ 298 Pa)	500 (236 L/s)	750 (354 L/s)	1250 (590 L/s)
Voltage	115/230/1/50/60 F.L.A. 8 amp	115/230/1/50/60 F.L.A. 8 amp	115/230/1/50/60 F.L.A. 8 amp
Nominal Operating Amperage	4 Amps	6 Amps	8 Amps
Integral Surge and Fuse System	Yes	Yes	Yes
Horse Power/Watts	3/4hp - 310W	3/4hp - 530W	3/4hp - 720W
Motor RPM	Variable	Variable	Variable
Return Size Needed	12" (120 in <sup>2</sup> ) (305mm/774cm <sup>2</sup> )	12" (120 in <sup>2</sup> ) (305mm/774cm <sup>2</sup> )	14" (168 in <sup>2</sup> ) (356mm/1084cm <sup>2</sup> )
Shipping Weight (no coil)	85 lbs (38.6 Kg)	97 lbs (44 Kg)	111 lbs (50.3 Kg)
Fan Coil Size (Including Collars)	Length	39 5/16" (821mm)	39 5/16" (821mm)
	Width	14 1/2" (368mm)	19 1/2" (495mm)
	Height	18 1/4" (464mm)	18 1/4" (464mm)

<sup>(1)</sup> Heating specs are rated at 68°F E.A.T., Cooling specs are rated at 80°F/67°F dB/wB

<sup>(2)</sup> Maximum length is from the unit to the supply run end cap. More than one run per unit is allowable.

<sup>(3)</sup> Minimum of eight 2" outlets per ton of cooling needed. (HE Duct = Minimum four outlets per ton)

BTUH - British Thermal Units per Hour  
E.W.T. - Entering Water Temperature  
GPM - US Gallons per Minute  
L/s - Litres per Second  
CFM - Cubic Feet per Minute

F.L.A. - Full-Load Amperage  
RPM - Revolutions per Minute  
E.S.P. - External Static Pressure  
E.A.T. - Entering Air Temperature  
dB/wB - Dry Bulb/Wet Bulb