

Comforte News

November/December 2001

**Product Bag Special
Indoor Air Quality
Vent Plates:**

- To Suit Your Décor*
- Styles*
- Low Traffic Areas*
- Kitchens & Baths*

Vent Plates To Suit Your Décor



Vent Plates are 5 inches in diameter with a 2 inch opening. Plastic vent plates are one piece molded plate c/w integral grill with friction fit mounting to the damper tube.



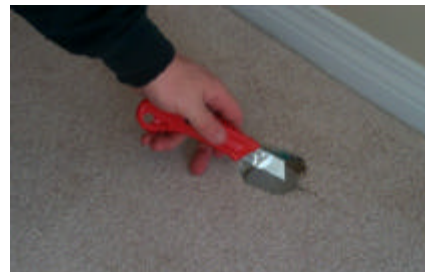
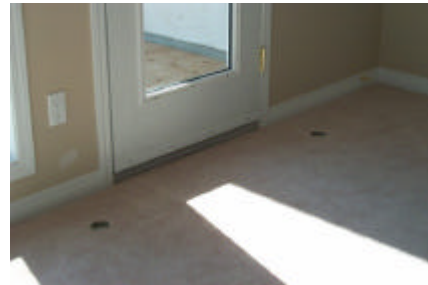
Optional Vent plates are also available in either oak or maple and are mounted the same as the plastic vent plate.



Damper key is a wrench designed to fit into the vent grill to allow for easy damper adjustment for comfort room-to-room.

Locations of vents for the Hi-Velocity Soft-Aire System for optimum Home Comfort

Outlets do not necessarily have to be located on an outside wall. Due to the Venturi Action of the Hi-Velocity Soft-Aire Home Comforte system, the air in the entire room is gently circulated at all times. Locate the vent outlets 6" on center from finished walls, corners or drapes and mark the hole center. Use a 3" hole saw to cut the vent hole through the floor or ceiling. Place the rough-in cap over the boot before fastening. To ensure that debris does not enter the system, do not cut the cap off until it is time to install the vent plates.

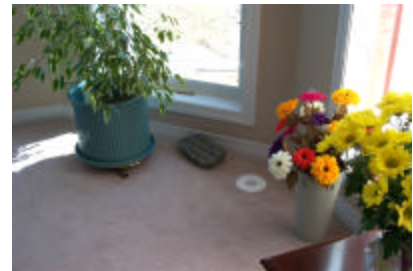
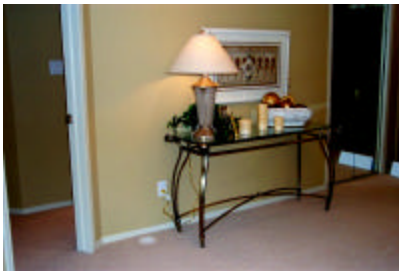


*Rough-in Cap
is removed
and now
ready for the
vent*



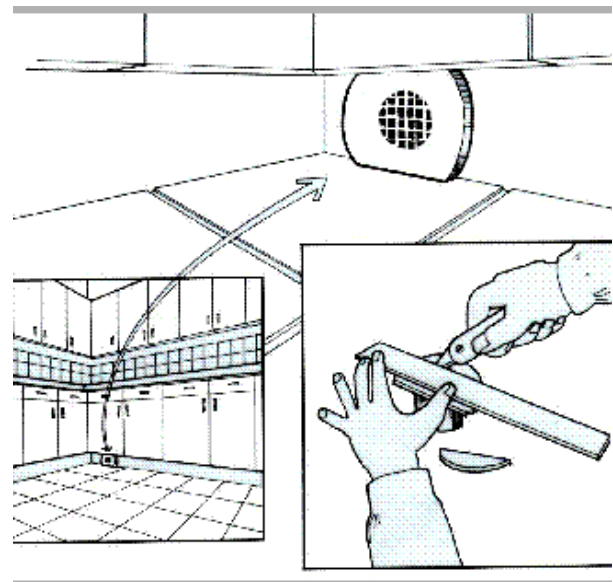
Vent Plates Are Located In Low Traffic Areas

Typical locations of vent plates are in the corner of a room, or to the side of a window or door and in the ceiling. When vents are properly located, the homeowner can expect to have a nearly draft free home



Kitchens and Bathrooms

Vents can be located in the kick space when it is hard to find a low traffic area. This can be easily done by trimming the top and bottom of our vent plate so it fits into this space. The easiest way to trim the plate is to score the top and bottom with a sharp knife, and then break off the trimmings. By locating the vents like this, there will be horizontal airflow instead of vertical. Caution should be exercised so that the air stream will not blow directly on people. For example, vents should not be located directly below a sink.



**Our
Booth**

**AHR EXPO
January 14-16, 2002
Atlantic City, New Jersey**

#1949

Indoor Air Quality

Temperature, ventilation, humidity and filtration are the factors for superior IAQ.

Retrofit or new homes, I've heard over and over again from the homeowners what a change in the Air quality.

- The Hi-Velocity Soft-Aire Home Comforte system provides even temperatures throughout your entire home.
- Variable speed controls located on the fancoil allow for precise control of ventilation and air movement throughout the home.
- **To allow for custom levels of comfort, every vent has a built in damper making it easy to control individual room temperatures.** (As shown on front page)

- Soft-Aire systems allow for the addition of moisture during heating and the removal of moisture during cooling. Removing up to 30% more humidity provides greater comfort levels even at a higher temperature eliminating the cold clammy feeling with conventional systems.
- A constant flow system reduces airborne dust considerably and conventional air filters work well. Electronic and HEPA air filters are available to provide even higher levels of filtration.
- Soft-Aire completely eliminates hot and cold spots throughout the home and provides year-round comfort.



Best wishes for the Holiday Season
May the year 2002 bring you
health, happiness and prosperity

**Featured in the next
Comforte News Issue
The Builders Series**

**Please let me know what you
would like to see in future
newsletters!**

**Contact Flo:
flo@hi-velocity.com
780-453-2093
Fax: 780-453-1932
Web Site: Pam
pam@hi-velocity.com**



PRODUCT SAMPLE BAG SPECIAL



NOVEMBER 15, 2001 TO JANUARY 15, 2002

Ideal for Sales Calls And Trade Shows

This 19" X 12" x 8" bag is supplied with products listed below (Value \$400.00). Regular cost of this bag is \$100.00. Order between November 15th and January 15th and **Save \$25.00.** **For only \$75.00** (Applicable Taxes & Freight Extra) you receive one of the best selling tools for Sales calls, Trade shows and on Job sites.



Bag Includes:

- Rough-in Damper Assembly
- Rough-in End Cap
- Vent Plate Key
- Branch Take-Off & Gasket
- Circuit Board
- Flex Duct Sample
- White Plastic, Oak & Maple Vent Plates
- 10 - 8 1/2" x 11" Two Fold Brochure
- 10 - 3 1/2" x 11" Three Fold Handout/Mailer
- 10 each Standard & Builders Fancoil Insert
- Page Dividers (Benefits of the Hi-Velocity Soft-Aire)
- ESP Business Card CD Promotional Video
- CD Product Catalogue
- Calculator
- Disposable Flashlight
- Business Card Wallet
- ESP Pen & Pencil

Company Name: _____

Address _____

Zip/Postal Code _____

Phone # (MUST HAVE) _____

Bag Quantity _____ Total Cost _____

Tax if Applicable _____

Shipping Charges _____

Total _____

Please fax, mail or e-mail order to:
 Energy Saving Products Attention Flo Bunn
 Fax: 780-453-1932
 Mail: 12615-124 Street – Edmonton, AB, CA – T5L 0N8
 E-mail: flo@hi-velocity.com